



SERIES 130

2" x 1-1/2" End Suction Centrifugal Pump

The Series 130 pump is a durable and adaptable solution designed to handle the rigorous demands of multiple industries. Built for superior efficiency and long-lasting performance, it is well-suited for agricultural, commercial, and industrial operations. Its close-coupled configuration with standard NEMA "C" face motors ensures dependable operation and simplified maintenance.

Manufactured from premium materials, this pump is offered in cast iron, bronze, or aluminum, making it ideal for transferring a broad range of liquids. Key features include stainless steel fasteners for enhanced corrosion resistance, dynamically balanced impellers for improved efficiency and extended bearing life, and a self-adjusting mechanical seal that resists corrosion and accommodates diverse fluid types.

The Series 130 emphasizes user convenience and flexibility. Fully tested "Wet End" PumpPAKs are available with or without motors and can be mounted to standard "C" frame motors within minutes for quick installation. Multiple drive configurations are supported, including close-coupled 56C, 145TC, 184C, hydraulic motor, pedestal and PumpPAK® (motorless option).

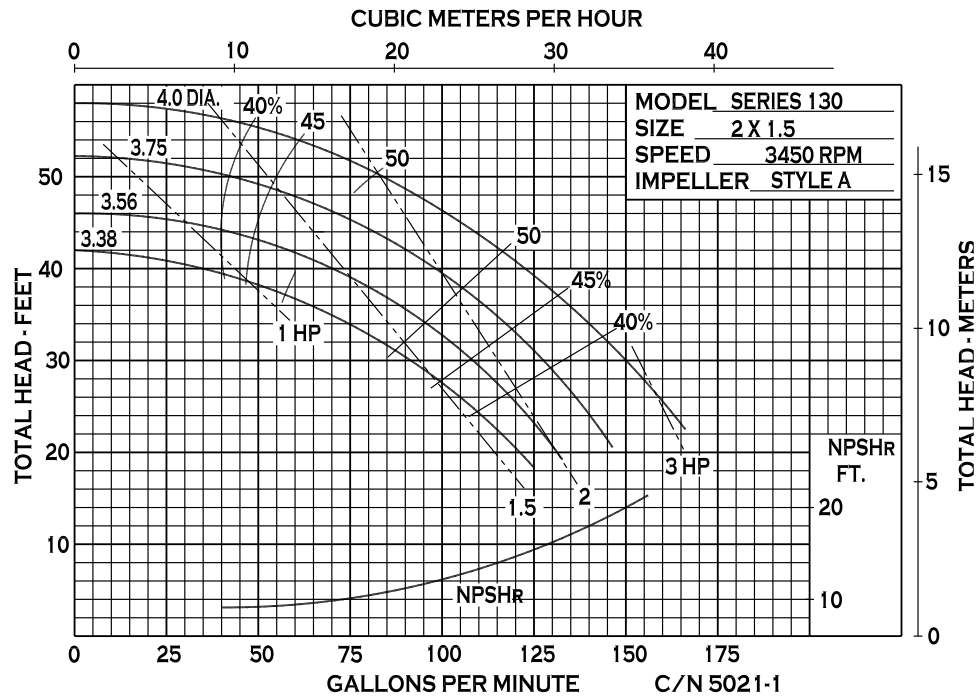
SPECIFICATIONS:

Suction / Discharge	2" x 1-1/2" NPT
Materials of Construction	Bronze, Cast iron
Flow	Up to 200 GPM (45.4 m ³ /h)
Head Feet	Up to 60' (18.2 m)
Impeller	4" (101.6 mm) enclosed cast iron or bronze
Motor	Up to 3 HP (2.2 kW)
Seal	Special seal material combinations available (consult factory), Standard carbon / ceramic / Viton
Drive Options	Close coupled 56C Close coupled 145TC Close coupled 184C Hydraulic motor .37 cu. in. (6.06 cm ³) Pedestal PumpPAK® (without motor)
Max Solid Size	.53" (13.5 mm)

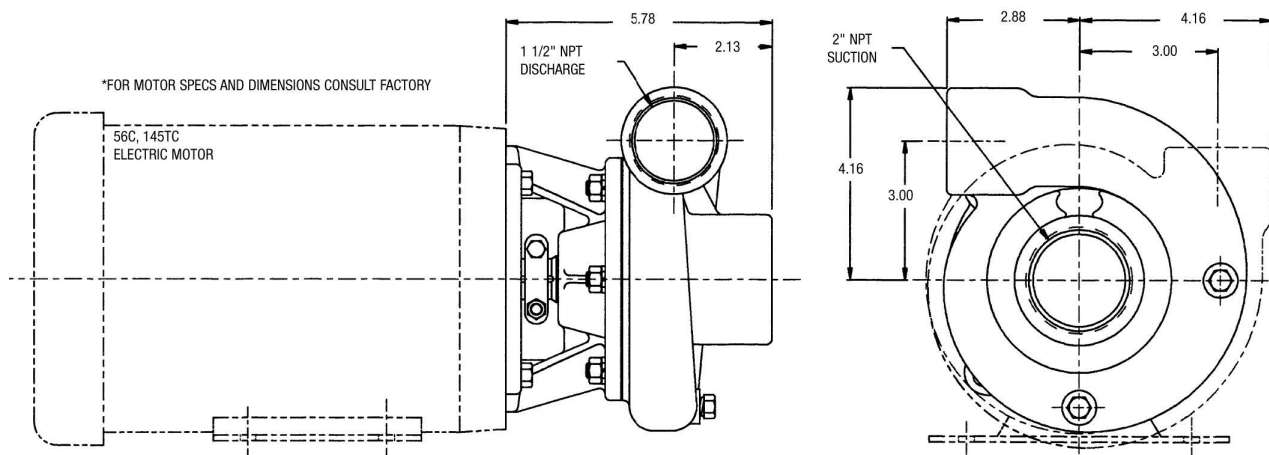
Application:

- Agricultural
- Commercial
- Industrial
- OEM

PERFORMANCE CURVES



DIMENSIONS



* For complete parts lists and troubleshooting guidance, please refer to the MP Pumps Installation Operation & Maintenance (IOM) Manual.